

Accommodation Options

Willandra

📍 19-21 George Street, Marrickville, NSW 2204

☎ 02 9569 4117

Located in Marrickville, the multi-cultural hub of Sydney's inner-west, Willandra provides high-quality aged care in a friendly, secure and comfortable residential environment.

- ✔ Aged Care
- ✔ Dementia Care
- ✔ Respite Care

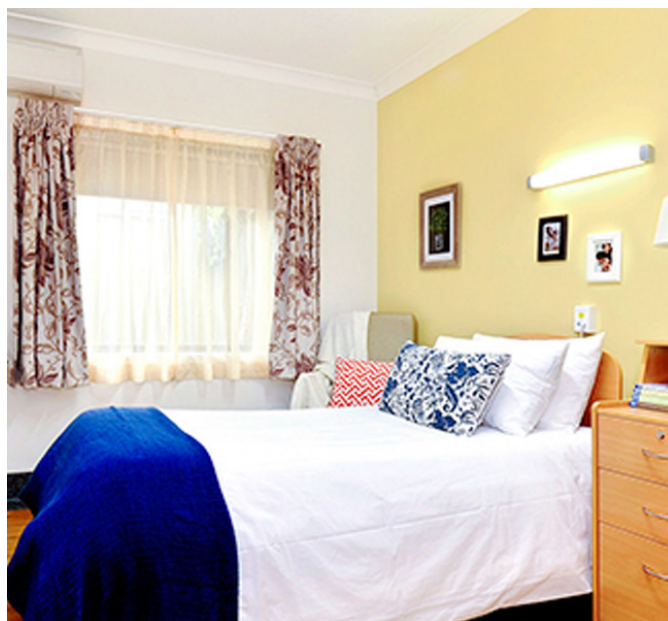
Single Room

Room features

- ✔ Comfortable private room.
- ✔ Plenty of space for storage.
- ✔ Temperature controlled with a single unit air-conditioning system for personal comfort.

Design features

- ✔ Warm and welcoming feel of a true family home.
- ✔ Services and support designed to optimise your health and wellbeing.



Single Room Room Cost

\$420,000

HEART OF POSITIVE AGEING

 **Bolton
Clarke** | RESIDENTIAL
AGED CARE

Accommodation Options

Willandra

📍 19-21 George Street, Marrickville, NSW 2204

☎ 02 9569 4117

Located in Marrickville, the multi-cultural hub of Sydney's inner-west, Willandra provides high-quality aged care in a friendly, secure and comfortable residential environment.

- ✔ Aged Care ✔ Dementia Care ✔ Respite Care

Companion Room Double

Room features

- ✔ Bright and airy room with an abundance of natural light.
- ✔ Wide windows overlooking the landscaped gardens and direct access to the front verandah.
- ✔ Temperature controlled via central heating systems and fitted ceiling fans.

Design features

- ✔ Warm and welcoming feel of a true family home.
- ✔ Services and support designed to optimise your health and wellbeing.



Companion Room Double Room Cost

\$340,000

HEART OF POSITIVE AGEING

 **Bolton
Clarke** | RESIDENTIAL
AGED CARE

Accommodation Options

Willandra

📍 19-21 George Street, Marrickville, NSW 2204

☎ 02 9569 4117

Located in Marrickville, the multi-cultural hub of Sydney's inner-west, Willandra provides high-quality aged care in a friendly, secure and comfortable residential environment.

- ✔ Aged Care
- ✔ Dementia Care
- ✔ Respite Care

Companion Room - 3 Bed

Room features

- ✔ Bright and airy room with an abundance of natural light.
- ✔ Wide windows overlooking the landscaped gardens and direct access to the front verandah.
- ✔ Temperature controlled via central heating systems and fitted ceiling fans.

Design features

- ✔ Warm and welcoming feel of a true family home.
- ✔ Services and support designed to optimise your health and wellbeing.



Companion Room - 3 Bed Room Cost

\$315,000

HEART OF POSITIVE AGEING

 **Bolton
Clarke** | RESIDENTIAL
AGED CARE

Accommodation Options



Willandra



📍 19-21 George Street, Marrickville, NSW 2204

☎ 02 9569 4117

Located in Marrickville, the multi-cultural hub of Sydney's inner-west, Willandra provides high-quality aged care in a friendly, secure and comfortable residential environment.

- ✔ Aged Care
- ✔ Dementia Care
- ✔ Respite Care

Companion Room - 4 Bed

Room features

- ✔ Bright and airy room with an abundance of natural light.
- ✔ Temperature controlled via central heating systems and fitted ceiling fans.

Design features

- ✔ Warm and welcoming feel of a true family home.
- ✔ Services and support designed to optimise your health and wellbeing.



Companion Room - 4 Bed Room Cost

\$290,000

HEART OF POSITIVE AGEING

